

HOLSWORTHY MARKET REPORT

Wednesday 3 January 2024

EVERY WEDNESDAY

Gates open 6am

SALE TIMES

09:45 am - Draft Ewes followed by Finished Lambs

10:30 am - Store Lambs

09.45 am - Calves followed by Stirks

11:00 am - Store Cattle followed by Finished & OTM Cattle

11:00 am - Dairy Cattle



343 HOGGS 171 DRAFT EWES & RAMS

09:45am

Auctioneer: Steve Prouse - 07767 895366

A smaller entry due to the bad weather with a lot of leaner lambs on offer. The good meat lambs very much selling to a premium. Top per kilo being 295p for a pen of Texel X for 44kgs at £130 a head from Mark Walter of Lew Farm, Bradworthy. Followed by 292p for a pen of 44kgs at £128.50 per head from Arthur Uglow of Edgecombe Farm, Milton Abbott. 6 other vendors realised 288p for various weights. The good meat having met a much improved trade and more could have been sold. Top of the day was £154.50 from Rob Wood of Forda Farm, Thornbury. 4 other pens from other vendors realised £145-£146 a head. A lot more lambs needed next week please to fulfil buyer's orders.

WEIGHT LAMBS	TOP		AVERAGE	
	Per head	P/Kg TLW	Per head	P/Kg TLW
32.1 - 39	93.50	240	93.50	240
39.1 - 45.5	130	295	119	278.5
45.6 - 52	134	288	131	279.2
52 +	154.5	295	126	278.2
Overall	154.5	295	126	278.2
Ewes				
Light	105		83	
Heavy	118		107	
Rams				

DRAFT EWES

As in the lambs, the ewes saw several showing the weather and handling lean but across the board a very fast trade was met. The good meat ewes topped at £118 from Horslett Farms, Clawton. Suffolk X to £116 and Mules to £107.



125 STORE LAMBS

All store lambs in keen demand with nearly all small framed lambs on offer. Top being £93 from W J Heard & Son of Lakelands, Bradworthy.

Entries invited for next week, please contact Steve on 07767 895366



www.kivells.com

Rural Professional

Exeter 01392 252262
 Holsworthy 01409 253275
 Launceston 01566 776886
 Liskeard 01579 345543

Your Kivells Rural Professional Department offer a complete valuation and rural service.



✓ Capital Grants
✓ Compensation

✓ Renewables Advice
✓ Sustainable Farming Incentive

✓ Valuations
✓ Landlord/Tenant

✓ Planning
✓ Landlord/Tenant



Penbode
Farm Vets





Competitively priced farm medicines
 Dairy and beef fertility clubs
 24/7/365 veterinary cover

Livestock fertility testing and advice
 VetTech services
 In house labs and lambing bays

www.penbodevets.co.uk

Holsworthy | Bradworthy | Stratton | Launceston | Camelford

A very decent entry for the first week of January with calves coming from far and wide to sell at Holsworthy. Trade today best described as consistent for the majority with the top end looking a tremendous trade.

WEANED CALVES

Plenty of weaned calves around topping at £475 (x2) and £470 for British Blue steers from AR Mitchell, St Kew, with more to £370 (x3) for CL Stevens, Woolsery the same vendor also sold Hereford steers to £430 and £415 (x2). British Blue heifers to £450 (x2) and £395 (x3) for AR Mitchell again.

WEANED CALVES						
BREED	BULLS			HEIFERS		
	No	Top	Ave	No	Top	Ave
British Blue	9	475	382	6	450	388
Limousin x	-	-	-	1	240	240
Hereford x	6	430	355	-	-	-

MILK CALVES

Many strong milk calves on offer and being rewarded well with Charolais bulls topping at £440, £435, £420 (x2) for VS Jose & Son, North Tamerton and £365, £345, £290 for RG & LA & SR Wearing, Tavistock. British Blue bulls to £410 for Wrangworthy Dairy, Bradworthy, £370 (x3) for AW Pomeroy & Son, West Putford, AJ & JJ Tucker & Son, Stibb Cross, DJ & WR Oke, Bradford, £365 for RC & MJ Andrews, Trerulefoot, £360 and £350 again for AW Pomeroy & Son. Simmental bulls to £295 for RWH Dilling, Highampton. Limousin bulls to £390, £375 AJ & PE Nancekivell, Kilkhampton and £260, £240 for WJ & CC Bond, Buckland Brewer. Hereford bulls to £265 for RC & MJ Andrews again and £215 for DJ & WR Oke, Bradford. Aberdeen Angus bulls selling to £208 twice, £170 for R & S Home, East Putford, £150 for TJ Daniel, Sutcombe, £138 (x2) for IM Mitchell, St Winnow and £135 (x3) for first time vendors to Holsworthy Market FG Palmer & Sons, Buckfastleigh being rewarded for their long journey. Charolais heifers to £365, £360, £290 for VS Jose & Son again also at £290 was NJ & KC Bowden, Highampton. British Blue heifers to £335 for RC & MJ Andrews again, £320 for AW Pomeroy & Son again, £280 (x2) for Westcott Farm Partnership again and AJ & JJ Tucker & Son again. Simmentals to £335 for RWH Dilling again. Limousin heifers to £375, £360, £335 for AJ & PE Nancekivell, Kilkhampton and £280 for WJ & CC Bond again. Hereford heifers to £195 for RC & MJ Andrews again. Aberdeen Angus heifers to £115 for TP & JH Isaac, Holsworthy and £100 for FG Palmer & Sons again.

MILK CALVES						
BREED	BULLS			HEIFERS		
	No	Top	Ave	No	Top	Ave
A. Angus	24	208	112	22	115	61
Limousin x	14	390	162	16	375	180
British Blue	45	410	221	41	335	144
Hereford x	13	265	107	12	195	53
Charolais x	10	440	346	6	365	283
Friesian	16	138	73			
Simmental x	1	295	295	1	335	335



DAIRY SIRED CALVES

Weaned Friesians to £150 (x2) for AR Mitchell again and £130 for CL Stevens again. Younger Friesians to £128 for CJ & CM Budge, St Giles, £112 for RAJ FRH Poole, Milton Damerel and £110 for CJ & CM Budge again. With processing calves back on after the Christmas break selling between £82-£99.

Please pre enter calves so we can inform potential buyers of anticipated numbers. Text, call or WhatsApp Tim Kivell 07788 281900

PLEASE NOTE: From now on the Milk Calves will be picked out and sold before the Weaned/Reared Calves.

52 STORE CATTLE – 11:00am
Auctioneer: David Kivell - 07899 960272

A reasonable entry for the start of 2024 saw a cracking trade. Top today was £1,330 a head for 5 22-month old British Blues coming in from Mr G Heal, Umlerleigh. Other British Blues from Mr T W Johns, Holsworthy to £1,195 for younger 16 months. British Blue steers from Mr A C Withecombe, Bideford at £1,080 & £1,075. Hereford steers topped at £1,160 for a steer from Mr T W Johns, Holsworthy. Aberdeen Angus' to £1,120 for 3 at 14-16 months from Mr A C Withecombe, Bideford.

Top of the heifers this week was £1,185 for a 19 month old heifer from Mr A C Withecombe who sold Aberdeen Angus' to £1,080. A young 9 month old Simmental heifer from Mr C McWhirter topped at £700. 8 month old Charolais steers from the same farm to £685 & £655 with Limousin heifers to £600.

Younger British Blues saw a top call of £640 for 3 steers from Messrs R A Ayre & Sons, Barnstaple whose heifers sold for £560 with Aberdeen Angus to £660.

To book in stores or arrange an on farm valuation, Tel: Alec Shadrick 07767 896136, Charlie Kivell 07794 000325 or Holsworthy Office 01409 253275



NOW IN:

- HOLSWORTHY
- BUDE
- BRADWORTHY

TORCH FARMVETS

Independent vets, dedicated care

t: 01409 331007 e: info@torchfarmvets.com
torchfarmvets.com



FORTHCOMING DAIRY SALES

WEDNESDAY 10 JANUARY – HOLSWORTHY MARKET

Sale of Dairy Cattle. Entries invited to 01409 253275 or dairy@kivells.com.

JOB VACANCIES

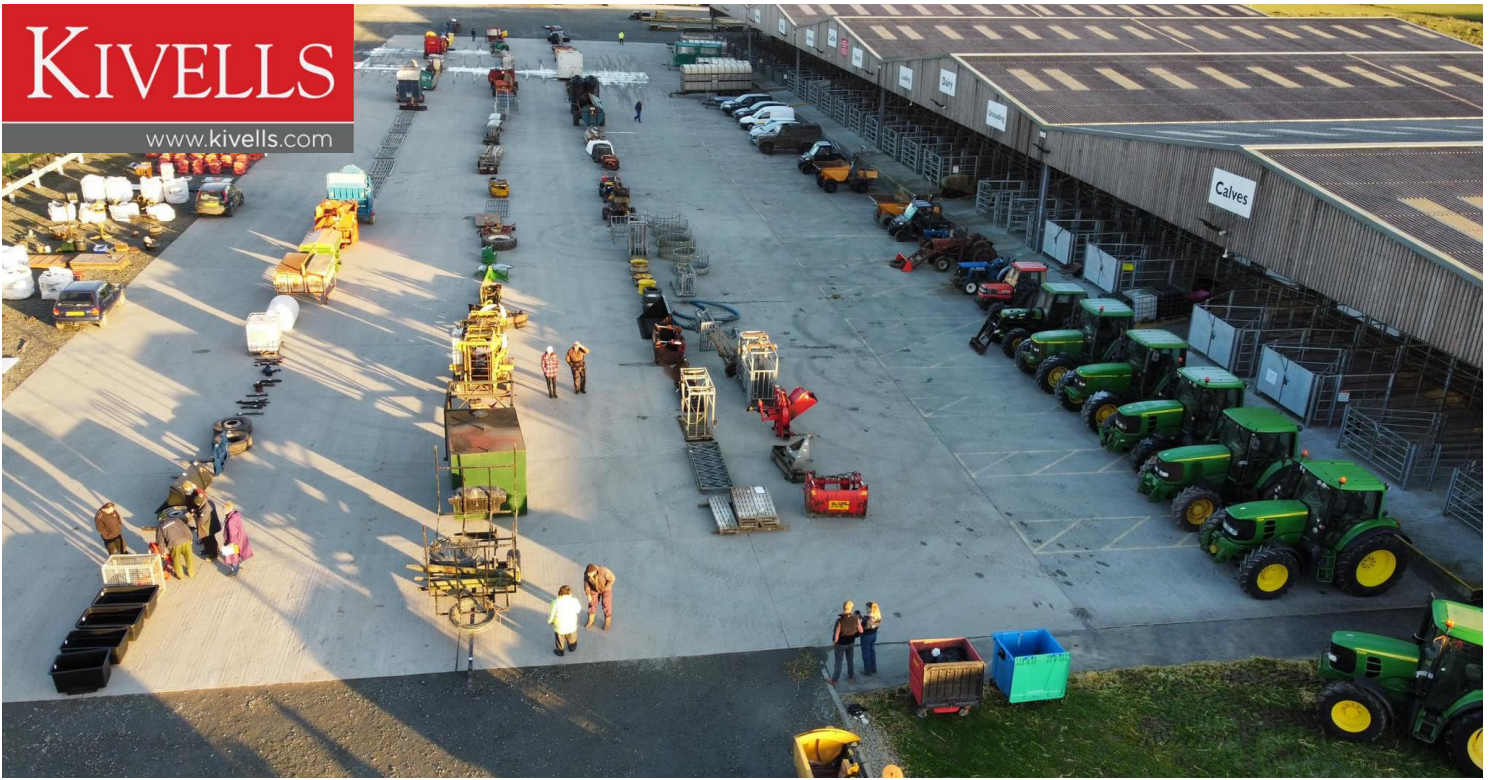
Livestock Handlers - Holsworthy, Hallworthy & Exeter

Working as part of our Livestock Handlers Team, duties for this role include loading and unloading stock and assisting with the movement of stock through the market whilst always adhering to health and safety protocols. The role will also involve washing and preparing livestock as and when required for the market and dispersal sales. A background knowledge in agriculture and handling stock is essential, as well as a commitment to animal welfare.

For further information or to apply for these posts, please visit our website www.kivells.com/job-vacancies or contact our HR team by email at sarahlouise.lydall@kivells.com

KIVELLS

www.kivells.com



MONTHLY COLLECTIVE MACHINERY SALE

Saturday 3rd February 2024

Holsworthy Livestock Market, EX22 7FA

Sale of Tractors, Vehicles, Machinery, Implements & Effects



Get your entries in now for free advertising!
machinery@kivells.com or 01409 253253

VET ATTESTATIONS

WHAT'S CHANGING & WHY?

Changes in EU legislation, as from **13th December 2023**, will require all producers selling livestock for slaughter to have had an annual on-farm veterinary visit to allow their animals, and/or part of any animal, to be exported out of the UK

THIS WILL BE VERIFIED BY A VETERINARY ATTESTATION DECLARATION.

Provided by the vet on farm, valid for 12 months.

Includes a unique veterinary attestation number ("VAN")

Example

1234567 - 12/345/6789 - 1024

[Vet MRCVS number] [CPH no.] [Valid to end of Oct 2024]

VENDORS SHOULD PROVIDE THE AUCTIONEERS WITH THEIR "VAN" NUMBER

Members of qualifying assurance schemes (Red Tractor, FAWL WLBP, QMS) do not require a veterinary attestation declaration

Guidance provided by the Livestock Auctioneers Association Limited
www.laa.co.uk



VET ATTESTATIONS

WHAT'S THE PROCESS IN LIVESTOCK MARKETS?

VENDOR PROVIDES THE AUCTIONEERS WITH THEIR "VAN" OR QUALIFYING ASSURANCE SCHEME MEMBERSHIP NO.



SHEEP - Included within the official sheep movement form



CATTLE - Via the market entry form



PIGS - Via the digital eAML2 form

A "VAN" is valid for 12 months.

AUCTIONEERS UPLOAD VENDORS "VAN" INTO THE MARKET SYSTEM

Any livestock that are not accompanied by a "VAN" or assurance scheme membership will be announced at point of sale.

FOLLOWING SALE, THE "VAN"/ASSURANCE NUMBER FOR EACH LOT WILL BE PROVIDED TO THE PURCHASER ON THEIR SALES INVOICE

This can be provided to the abattoir Vet if/when required.

The requirement for Veterinary Attestations for all livestock sold for slaughter is due to a change in EU legislation.

Guidance provided by the Livestock Auctioneers Association Limited
www.laa.co.uk



VET ATTESTATIONS

HOW TO PREPARE FOR THE CHANGES

Prior to **13th December 2023**, livestock producers should arrange a veterinary visit on farm for completion of the **Veterinary Attestation Declaration**.

This visit can coincide with any other routine on-farm veterinary visit, or **Animal Health & Welfare Pathway Review**.
Speak to your Auctioneer for more details (AHWP - England Only).

In some cases, vets may be able to provide retrospective Veterinary Attestation Declaration if a recent on-farm visit has taken place that meets the requirements.

OR producers can provide evidence of a qualifying assurance scheme.

(Red Tractor, FAWL WLBP, QMS)

The requirement for Veterinary Attestations for all livestock sold for slaughter is due to a change in EU legislation.

Guidance provided by the Livestock Auctioneers Association Limited
www.laa.co.uk



VET ATTESTATIONS

WHAT ELSE DO I NEED TO KNOW?

IS A "VAN" NUMBER REQUIRED FOR ALL LIVESTOCK?

No. A "VAN" is only required for livestock sold for slaughter, from the consigning holding.

IS THERE A MINIMUM RESIDENCY PERIOD FOR THE LAST HOLDING?

The requirement for a "VAN" number is applicable only to the last holding, regardless of residency period.

WHAT HAPPENS IF A VENDOR DOES NOT HAVE A "VAN" OR MEMBERSHIP OF AN ASSURANCE SCHEME BY 13TH DECEMBER 2023?

Any livestock without a "VAN" or membership of a qualifying assurance scheme will be identified at point of sale and may not be eligible for export.

The requirement for Veterinary Attestations for all livestock sold for slaughter is due to a change in EU legislation.

Guidance provided by the Livestock Auctioneers Association Limited
www.laa.co.uk





READY MIXED CONCRETE

- ◆ Ready Mixed Concrete
- ◆ Liquid Floor Screeds
- ◆ Dry Screed
- ◆ Sand & Aggregates

**FAST
FRIENDLY
PROFESSIONAL**

**FOR QUOTES, BOOKINGS, OR MORE INFORMATION,
PLEASE CALL US ON 01288 362111 (OPTION 2) OR EMAIL US AT
rmc@macplant-ltd.co.uk**

Mac Crete
Bridgerule Industrial Estate
Holsworthy
EX22 7EB



www.macplant-ltd.co.uk



Lely Juno - The automatic feed pusher

Frequent feed pushing with the Lely Juno stimulates a higher consumption of forage which can have a positive impact on animal health, fertility, production & farm finances.

**Call Lely Center Holsworthy on 01409 413122
or 01404 515599 for more information.**

www.lely.com/gb/centers/holsworthy/



Kitchadon Farm Eggesford, Chumleigh, Devon

300 acre arable and stock rearing farm with a five bedroom farmhouse, range of farm buildings and option for a commercial mill.

Available on a 10 year Farm Business Tenancy Agreement by Informal Tender.

Tenders closing 5.00pm Friday, 20th October 2023.

Tender Particulars available from www.kivells.com or mark.bunt@kivells.com

Liskeard Farms & Land Agency
mark.bunt@kivells.com | 01579 345543



LET!



LAND AND BUILDINGS TO LET

HENNETT FARM, ST. JULIOT, BOSCASTLE

Approximately 282.24 acres and a range of farm buildings.

The Farm will be let by informal tender under a 5 year Farm Business Tenancy (under the Agricultural Tenancies Act 1995), commencing on 1st April 2024. The Farmhouse is excluded, and the Landlord will continue to live there.

All tenders must be returned to Kivells, Holsworthy Market, no later than Friday 23rd February 2024 at 12 noon.

Full details available from Thomas Rattray BSc (Hons) MRICS FAAV
Holsworthy Farms & Land Department
thomas.rattray@kivells.com | 01566 776886 | 07813 016804

KIVELLS

www.kivells.com

LAND AND BUILDINGS TO LET

TREWOODLOE AND GOLBERDON DOWN, GOLBERDON, CALLETON

188.54 acres and range of modern farm buildings available in two lots.
Lot 1 – 121.08 of pasture land and range of modern farm buildings.
Lot 2 – 67.46 acres of pasture and arable land.

Available on a five year Farm Business Tenancy commencing on 29th September 2023.
Tenders to be submitted no later than 5.00pm on Friday, 4th August 2023.

Full details available from Mark Bunt BSc MRICS FAAV
Liskeard Farms & Land Department
mark.bunt@kivells.com | 01579 345 543 | 07879 640970

KIVELLS

www.kivells.com

LAND TO LET

TREGENNA FARM, LERRYN, LOSTWITHIEL, CORNWALL

176.18 acres of arable and pasture land available in three lots

Lot 1 – 58.76 acres
Lot 2 – 73.37 acres
Lot 3 – 44.05 acres

Available on a three year Farm Business Tenancy commencing on 29th September 2023.
Tenders to be submitted no later than 5pm on Friday, 4th August 2023

Full details available from Mark Bunt BSc MRICS FAAV
Liskeard Farms & Land Department
mark.bunt@kivells.com | 01579 345 543 | 07879 640970

KIVELLS

www.kivells.com

LET!

Badges

Clawton, Holsworthy, Devon

- A real lifestyle opportunity in the heart of unspoilt Devon countryside
- Pretty and beautifully presented three bedroom cottage
- Small range of outbuildings including a stone & cob shippon with potential (subject to planning) and a modern 45' x 40' barn
- 67 acres of pasture land and woodland with river frontage
- Huge conservation appeal.

Guide Price: £895,000

Holsworthy Farms & Land Agency
farms@kivells.com | 01409 259547



Farms **For Auction**

Wednesday 17th January, 7.00pm

Venue: Lifton Strawberry Fields, Lifton, Devon PL16 0DE

KIVELLS

www.kivells.com

Sunny Bank

Yeoford, Crediton, Devon

- Four-bedroom detached farmhouse
- Opportunity to personalise and create a family home
- Generous plot exceeding approximately 2.50 acres
- Outbuildings
- Countryside views
- Rural, yet accessible setting

Auction Guide Price: £350,000

Exeter Farms & Land Agency
exeter@kivells.com | 01392 252262



Farms For Auction

Wednesday 17th January, 7.00pm

Venue: Lifton Strawberry Fields, Lifton, Devon PL16 0DE

KIVELLS

www.kivells.com

Cottage Farm

Jacobstow, Bude

- Lot 1 | Farmhouse, small range of outbuildings, orchard/paddock and woodland. In all just under 5¼ acres.
Auction Guide Price £390,000 - £450,000
- Lot 2 | Two former agricultural buildings, one with planning permission for residential development. In all some 0.22 acres.
Auction Guide Price £65,000 - £85,000
- Lot 3 | Some 51.19 acres of organic pasture land with road access and far reaching views (with an option to buy a wind turbine lease at a fixed additional charge).
Auction Guide £325,000 - £350,000

Holsworthy Farms & Land Agency
farms@kivells.com | 01409 259547



For Auction

Wednesday 17th January, 7.00pm

Venue: Lifton Strawberry Fields, Lifton, Devon PL16 0DE

KIVELLS

www.kivells.com

Bulland Barn

St. Cleer, Liskeard, Cornwall

- Two adjoining traditional stone barns with potential, subject to planning.
- Quiet rural valley setting with lovely views
- Mains water and electricity on site (not connected).

Auction Guide Price: £50,000 - £75,000

Holsworthy Farms & Land Agency
farms@kivells.com | 01409 259547



Land for Auction

Wednesday 17th January, 7.00pm

KIVELLS

www.kivells.com

Venue: Lifton Strawberry Fields, Lifton, Devon PL16 0DE

Land at Mera Park

Landrake, Saltash | Auction Guide Price £275,000 - £285,000
For sale by public auction - Wednesday 17th January



Approximately 30.27 acres of productive arable land within a ring fence, benefitting from excellent access off the adjoining main road and a quiet parish road.

Liskeard Farms & Land Department
mark.bunt@kivells.com | 01579 345543

Land off Appledore Road

Northam, Bideford | Auction Guide Price £110,000
For sale by public auction - Wednesday 17th January



The land off Appledore Road extends to some 4.58 acres and comprises a very gently sloping pasture field enclosed within natural hedge banks and post and wire fencing.

Holworthy Farms & Land Department
farms@kivells.com | 01409 259547

Fishing on the Rivers Thrushel & Lyd

Lifton, Devon | Auction Guide Price £75,000
For sale by public auction - Wednesday 17th January



A rare opportunity to acquire fishing rights in a beautiful area of West Devon. 680m of DOUBLE BANK fishing on the River Lyd. 2490m of SINGLE BANK fishing on the River Thrushel.

Holworthy Farms & Land Department
farms@kivells.com | 01409 259547

Buildings and Yard at Stone Farm

Hatherleigh, Okehampton | Auction Guide Price £100,000
For sale by public auction - Wednesday 17th January



A level site of just over 1 acre with a perimeter fence and a small range of modern general purposes buildings with concrete floors.

Holworthy Farms & Land Department
farms@kivells.com | 01409 259547

Previous Auction Results

Wednesday 22nd November

KIVELLS

www.kivells.com

Land at Part White Gates

Chawleigh, Chulmleigh | Auction Guide Price £250,000
SOLD: £320,000



A superb block of level pasture land in four sizeable and productive field parcels. Benefiting from mains water and excellent road frontage with access off the B3042 Main Road.

Exeter Farms & Land Department
exeter@kivells.com | 01392 252262

Part Higher Hele Farm (LOT 1)

Bradworthy, Holsworthy | Auction Guide Price £225,000
SOLD: £227,000



Approx. 35.15 acres of grazing land including some 6½ acres of native woodland and scrub, mainly level and gently sloping. Huge wildlife appeal and suitable for biodiversity off-setting.

Holsworthy Farms & Land Department
farms@kivells.com | 01409 259547

Land at Pattacott

Maxworthy, Launceston | Auction Guide Price £200,000
SOLD: £200,000



Just over 32½ acres of pasture and arable land, gently sloping and south facing, good sized fields. Benefiting from natural water.

Holsworthy Farms & Land Department
farms@kivells.com | 01409 259547

Land at Lower Trelaske

Lampetton, St Cleer | Auction Guide Price £45,000 - £55,000
SOLD: £66,000



Approximately 6.76 acres of pasture and amenity land accessed off a quiet parish road with a natural water supply running into a wildlife pond.

Liskeard Farms & Land Department
mark.bunt@kivells.com | 01579 345543

Land at St Dominic Park

Harrowbarrow, Callington | Auction Guide Price £25,000 - £30,000
SOLD: £52,000



Just over ½ acre level paddock in a pretty, rural setting in the sought after Tamar Valley. Suitable for amenity purposes, horticultural, keeping livestock or occasional camping.

Holsworthy Farms & Land Department
farms@kivells.com | 01409 259547

Land at Grogley Halt

Washaway, Bodmin | Auction Guide Price £25,000
SOLD: £44,500



Secluded parcel of land, extending to approx 2.54 ares, not far from the Camel Trail and close to Bodmin Moor and Wadebridge in a sheltered setting with River Camel frontage.

Holsworthy Farms & Land Department
farms@kivells.com | 01409 259547

Previous Auction Results

Wednesday 22nd November

KIVELLS

www.kivells.com

Land at Middle Trefrew

Trefrew, Camelford | Auction Guide Price £60,000
SOLD: £84,000



Just under 3½ acres in two pretty fields, gently sloping and south facing. Not far from Tintagel and North Cornish coast, with country outlying towards Bodmin Moor.

Holsworthy Farms & Land Department
farms@kivells.com | 01409 259547

Land at Glenleigh Park (LOT 1)

Sticker, St. Austell | Auction Guide Price £50,000
SOLD: £78,000



Approx. 5.26 acres with access from the adjoining no through road which leads to a mainly level or very gently sloping pasture field with an area of pretty woodland.

Holsworthy Farms & Land Department
farms@kivells.com | 01409 259547

Land at Glenleigh Park (LOT 2)

Sticker, St. Austell | Auction Guide Price £16,500
SOLD: £38,000



Approx. 0.68 acres with access from the adjoining parish road which leads to a strip of gently sloping land bounded by a natural hedge bank and post and rail fencing.

Holsworthy Farms & Land Department
farms@kivells.com | 01409 259547

Land near Rectory Farm

Halwill, Beaworthy | Auction Guide Price £50,000
SOLD: £50,000



A pretty field, just over 6 acres in a quiet rural location. Mainly level with stream frontage and a haven for wildlife.

Holsworthy Farms & Land Department
farms@kivells.com | 01409 259547

Land off Snowdrop Lane

Lantallack, Saltash | Auction Guide Price £25,000
SOLD: £25,000



A pretty sloping field extending to approx. 1.76 acres, in a rural yet accessible location. Suitable for a number of purposes such as grazing, equestrian or amenity land.

Holsworthy Farms & Land Department
farms@kivells.com | 01409 259547

Land For Sale

KIVELLS

www.kivells.com

Land North of Foxhole

Halwill, Beaworthy | Guide Price £135,000



A quietly situated block of 11 acres of pasture land, mainly level and gently sloping with attractive tree lined boundaries.

Holsworthy Farms & Land Department
farms@kivells.com | 01409 259547

Land at Stoke Canon

Exeter, Devon | Guide Price £375,000



A highly productive run of level arable and pastureland with livestock handling pens extending to just under 46 acres.

Exeter Farms & Land Department
simon.alford@kivells.com | 01392 252262

Land at Crylla

Common Moor, Liskeard | Guide Price £1,750,000



An excellent ring fenced block of some 141½ acres of pasture land on the edge of Bodmin Moor with far reaching views.

Holsworthy Farms & Land Department
farms@kivells.com | 01409 259547

Land At Waterwell Lane (Lot 3)

Christow, Exeter | Guide Price £70,000



2.5499 acres in two enclosures and a timber building with lean-to. The land benefits from direct road access and natural and well water. Further land available.

Exeter Farms & Land Department
Exeter@kivells.com | 01392 252262

Land At Seckington

Winkleigh, Devon | Offers in excess of £300,000



Just over 29 acres of south facing, productive pasture and arable land. Useful sized enclosures with road frontage.

Holsworthy Farms & Land Agency
Farms@kivells.com | 01409 259547

Land off Redlap Lane

Stoke Fleming, Dartmouth | Guide Price £150,000



6.8 acres of level, south facing pasture land benefiting from picturesque views across the South Devon coast.

Exeter Farms & Land Department
Exeter@kivells.com | 01392 252262

Farms Sale Agreed

KIVELLS

www.kivells.com

Higher Badworthy Farm South Brent, Devon



Lot 1 - Higher Badworthy Farm, Bungalow, Burrows, South Brent, Devon. Approximately 53.94 acres.
Guide Price: £1,215,000

Lot 2 - Approximately 13.22 acres.
Guide Price: £135,000

As a whole - Higher Badworthy Farm, Burrows, South Brent, Devon. Buildings and approximately 67.16 acres.
Guide Price: £1,350,000

Exeter Farms & Land Agency
exeter@kivells.com | 01392 252262

Lower Trevorder Farm Mount, Bodmin, Cornwall



acquire 193 acre quality stock and arable land
modern adaptable stock buildings
structure and arable land
completed three bedroom farmhouse
Diversification income via Telecommunications Masts
Extremely accessible location, not far from the A38
In all some 193 acres

Guide Price: £2,300,000 - £2,400,000

Exeter Farms & Land Agency
exeter@kivells.com | 01579 345543

Keymelford Farm Buildings & Land Keymelford, Colebrook, Crediton, Devon



For sale in three lots, Keymelford Farm Buildings & Land are suitable for a variety of alternative uses to the usual consents.

Lot 1 - Agricultural buildings and yard area with surrounding extending to 0.41 acres.

Guide Price: £150,000

Exeter Farms & Land Agency
exeter@kivells.com | 01392 252262

Keymelford Farm Buildings & Land Keymelford, Colebrook, Crediton, Devon



Agricultural buildings and yard area with land surrounding extending to 0.41 acres.

Guide Price: £150,000

Agricultural building with concrete pad and land surrounding extending to 0.41 acres.

Guide Price: £135,000

3 - A small grassland area extending to approximately 0.41 acres. **Guide Price: £25,000**

Exeter Farms & Land Agency
exeter@kivells.com | 01392 252262

Farms Sale Agreed

KIVELLS

www.kivells.com

Franklands Farm Neopardy, Crediton, Devon



Lot 1 - Farmhouse and approximately 3.54 acres of agricultural land
Guide Price: £580,000

Lot 2 - Former agricultural buildings extending over approximately 1.24 acres
Guide Price: £200,000

Lot 3 - Agricultural land and 49.07 acres of woodland
Guide Price: £390,000

Lot 4 - Approximately 13.71 acres.
Guide Price: £160,000

Exeter Farms & Land Agency
exeter@kivells.com | 01392 252262

Meadow Court North Tawton, Devon



Lot 1 - Meadow Court Bungalow, buildings and approximately 1.24 acres of agricultural land
Guide Price: £635,000

Lot 2 - Former agricultural buildings extending over approximately 19.59 acres of agricultural land totalling approximately 19.59 acres
Guide Price: £155,000

Lot 3 - Agricultural land and 49.07 acres of woodland and woodland
Guide Price: £350,000

Lot 4: Agricultural land and woodland totalling approximately 13.71 acres
Guide Price: £160,000

Exeter Farms & Land Agency
exeter@kivells.com | 01392 252262

Treblethick Farm St. Mabyn, Bodmin



- Substantial detached character six bedroom farmhouse
- Range of Grade II listed traditional farm buildings with high potential
- Productive farmland, some of which noted as Grade II
- Superb investment opportunity
- Freehold and subject to a Farm Business Tenancy

Guide Price: £2,800,000 - £2,900,000

Liskeard Farms & Land Agency
mark.bunt@kivells.com | 01579 345543

Solomons Farm Exminster, Exeter, Devon



• Ring-fenced farm peacefully set in pretty countryside

• In all about 99.53 acres. Available as a whole or in 2 lots

Lot 1: Guide Price: £800,000

Lot 2: Guide Price: £1,125,000

Exeter Farms & Land Agency
exeter@kivells.com | 01392 252262

Farms Sale Agreed

KIVELLS

www.kivells.com

New Hartswell Farm Herodsfoot, Liskeard, Cornwall

- Organic green-field dairy enterprise
- Some 98 acres in all
- 16:32 herringbone parlour & 150 cubicles
- Planning permission for a dwelling
- Planning for conversion of an existing barn
- 80kw wind turbine and 60kw solar array
- Fantastic far reaching views and not far from the South Cornish coast

Guide Price: £1,950,000

Holsworthy Farms & Land Agency
holsworthy@kivells.com | 01409 259547



SOLD!

Sizable dairy farm with multiple dwellings

KIVELLS

www.kivells.com

Homelea Farm Highampton, Beaworthy, Devon

Peacefully located amongst rolling Devonshire countryside, Kivells were delighted to bring Homelea Farm to the market, an excellent 277 acre ring fenced dairy farm with huge appeal.

Including a five bedroom farmhouse, plus a pair of detached three bedroom bungalows, an extensive range of modern dairy farm buildings providing accommodation for 430 head of cattle, Homelea Farm was launched to the market with a guide of £3,400,000, receiving strong interest from a multitude of potential purchasers.

The farms team and professional department acted as a “one-stop-shop” for the vendors, seeing the farm sell inclusive of its first class herd of cows.



Land Sale Agreed

KIVELLS

www.kivells.com

Land at East Worth

Northlew, Okehampton | Guide Price £625,000

- 76 acres of grassland
- Good sized agricultural building
- With a pond and pockets of woodland
- Well fenced for sheep
- Quiet rural location

Holsworthy Farms & Land Agency
Farms@kivells.com | 01409 259547



Land at Trescoll Farm

Lockengate, Bugle, St Austell | Guide Price £800,000

- A superb run of 80 acres of productive arable land
- Level with good access
- In an accessible location, just off the A30
- Currently in potatoes

Holsworthy Farms & Land Agency
Farms@kivells.com | 01409 259547



Land Sale Agreed

KIVELLS

www.kivells.com

Land at Trevoyan

Trevorrick, St. Merryn | Guide Price £900,000

- A superb block of productive arable and pasture land
- In a sought after farming area
- Some 91 acres in two blocks, both with road frontage and excellent access
- For sale by Private Treaty

Holsworthy Farms & Land Agency
Farms@kivells.com | 01409 259547



Land at Trecan

Lanreath, Looe | Guide Price £500,000

- A fantastic block of 42½ acres of productive organic pasture land
- Mainly level or very gently sloping
- Laid out in just two fields
- Planning permission for two agricultural buildings
- Sought after location, close to the South West Coast Path

Holsworthy Farms & Land Agency
Farms@kivells.com | 01409 259547



Land Sale Agreed

KIVELLS

www.kivells.com

Land At Waterwell Lane (Lot 1) Christow, Exeter | Guide Price £60,000



0.944 acres with a garage and large agricultural building, benefiting from direct road access. Further land available.

Exeter Farms & Land Department
Exeter@kivells.com | 01392 252262

Land At Waterwell Lane (Lot 2) Christow, Exeter | Guide Price £40,000



1.695 acres of land with natural water supply. Further land available.

Exeter Farms & Land Department
Exeter@kivells.com | 01392 252262

Land at Tredinnick St. Mabyn, Bodmin | Guide Price £240,000 - £250,000



Approximately 27.57 acres of productive pasture and arable land with road frontage.

Liskeard Farms & Land Agency
mark.bunt@kivells.com | 01409 259547

Land At Gaverigan Manor (Lot 2) Indian Queens | Guide Price £30,000 - £35,000



Approx. 12.39 acres comprising an enclosure of level amenity land, classified as a Site of Special Scientific Interest (SSSI).

Liskeard Farms & Land Agency
mark.bunt@kivells.com | 01579 345543

Land At Bell Farm (Lot 1) Lanner, Redruth | Guide Price £250,000



LOT 1 extends to approximately 18.39 acres comprising pasture used for cutting and grazing purposes.

Liskeard Farms & Land Agency
mark.bunt@kivells.com | 01579 345543

Land At Bell Farm (Lot 2) Lanner, Redruth | Guide Price £30,000



LOT 2 extends to approximately 1.06 acres comprising an enclosure of rough grazing and woodland, along with a hardcore access track, which leads back to a parish road.

Liskeard Farms & Land Agency
mark.bunt@kivells.com | 01579 345543

Land Sale Agreed

KIVELLS

www.kivells.com

Land at Greenacres

Cheriton Bishop, Exeter | Offers in excess of £95,000



An attractive land parcel split into two enclosures benefiting from two ponds and a piped natural water supply - 9.66 acres.

Exeter Farms & Land Department
Exeter@kivells.com | 01392 252262